



# FOR THE PERFECT FLOOR

ISSUE TWO

News and updates from one of the world's leading manufacturers of high performance flooring products

## THE IDEAL SYSTEM FOR LUXURY VINYL TILES



### WHAT'S INSIDE...

# WIN!

A FREE TRAMEX CMEX 2 CONCRETE METER



## ARDEXacademy

TRAINING EXCELLENCE

Register your interest in our subfloor preparation & LVT installation courses.



## DISCOVER THE EASIEST WAY TO LEVEL FLOORS WITH ARDEX K 39



PROUD MEMBERS OF



# ARDITEX NA NO ALTERNATIVE

Ultra Rapid Setting Subfloor Levelling and Smoothing Compound



- Can be used with confidence over old adhesive residues, including bitumen
- Excellent adhesion without priming to almost all substrates, even ceramic tiles
- Unaffected by moisture, can be used under an ARDEX Damp Proof Membrane and direct to damp concrete

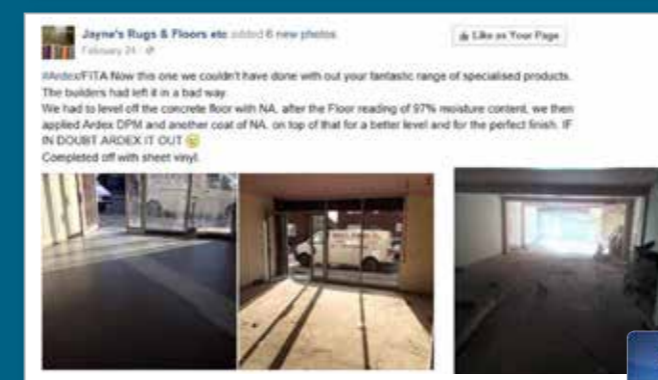
the original yellow bag®

## FITA COMPETITION WINNERS



In issue 1 of 'For the Perfect Floor' we gave you the chance to win 1 of 6 places on a FITA LVT installation course **worth £600!**

Here are the 6 lucky winners.



**Michael Atkinson Flooring**  
ARDITEX NA, a trusted favourite for years, ticks all the boxes! Applying over traditional victorian tiled floor which has adhesive residues, very slight movement in some tiles and no dpc. Overlaying with engineered oak plank.



## Kelvin Rynhart from Tramex explains why IT IS IMPORTANT TO TEST FLOORS FOR MOISTURE, and the most common methods for doing so.

**Why should you test?** It is vital to understand the moisture condition of a screed or subfloor prior to the application of any floorcovering or coating. The subfloor may have excess moisture due to construction moisture which is not sufficiently dry. It is also common to have moisture ingress due to faulty or non-existent subfloor damp proof membranes or condensation issues on the site.

There are practical and recognised testing methods available that can save the installer a lot of time and money.

**What can happen if you don't?** Failure to test the moisture conditions of the subfloor can result in a host of moisture related problems such as adhesive degradation, delaminating floorcoverings, condensation, blistering, movement, mould and overall deterioration of the floorcovering. Not to mention the downtime required to fix the job and the damage to the installer's reputation.

**Understanding capacitance modes -** The capacitance method of testing is the fastest and easiest way to assess the floor, and monitor the drying, with instant measurements gauged to indicate moisture content by weight in the floor slab or screed. This test helps to locate the

areas of greatest concern for further destructive or time consuming tests to national standards.

**Codes of practice -** It is very important that testing includes compliance to national standards, for example in the UK a humidity box or hygrometer probe should be used to confirm the moisture condition before installation.

However, performing humidity tests without first carrying out capacitance type testing is also risky. Humidity tests take a long time to perform and only measure a small sample of the concrete slab, hence it is quite possible to miss a problem entirely.

**How to measure -** It is very important to assess the ambient humidity conditions before further testing, this will help identify or rule out the possibility of condensation issues on site, which can otherwise be difficult to distinguish for moisture problems originating from the slab.

Next, using the capacitance method, systematic tests of the entire floor should be carried out. The standard method for doing this requires five areas be tested for the first 90-100m<sup>2</sup> and three areas for every additional 90-100m<sup>2</sup>.

Locations of high moisture, as well as average and low readings, should be selected for further testing with RH methods to British Standards.

Two methods of Equilibrium Relative Humidity (ERH) testing are commonly in use in the UK:

**Surface humidity box -** Seal a purpose built humidity box to the floor with butyl tape ensuring the seal is complete to block humidity entering or leaving from anywhere other than the floor itself.

**Drill-in probe/sleeve method -** A hole is drilled to approximately 40% of the depth of the slab and a specially designed plastic tube or sleeve is inserted. When the air within the sleeve is given time to acclimate an RH probe is pushed firmly into place and allowed to equalise with the airspace in the sleeve.

When carrying out ERH testing be sure to comply with British Standards such as BS8201 and BS8203.



# WIN A FREE TRAMEX CMEX 2 CONCRETE METER.



Tramex has been manufacturing moisture meters for over thirty years, and courtesy of Tramex, we're giving you the chance to win a CMEX II moisture meter, designed for the instant and precise measurement of moisture content in concrete and other subfloors and screeds, worth **£400**.

For a chance to win this prize simply send us a picture of you using an ARDEX DPM or ARDEX MVS 95, with a few words on what you like about the product.\*

You can email your picture to [info@ardex.co.uk](mailto:info@ardex.co.uk), post it on the **ARDEX UK** Facebook page, or tweet it to **@ARDEXUKFlooring** using the **#ARDEX/TRAMEX**

\*All entries must be received before 31st July 2016. ARDEX will select the best entry and notify the winner w/c 8th August 2016.



## ARDEX - THE MOISTURE CONTROL EXPERTS

Surface damp proof membranes form a film which restricts the passage of moisture, and allow the controlled passage of moisture vapour; protecting the adhesive and final floorcovering. Advice in the Contract Flooring Association's 'Guide to Contract Flooring' states that types of surface damp proof membranes are available to deal with rising damp and residual construction moisture, but some are only suitable for the latter, so it's important to correctly specify the right product for the right installation.

### The Control of Residual Construction Moisture

#### WHEN TO USE ARDEX MVS 95

- 1 WHERE A STRUCTURAL DAMP PROOF MEMBRANE IS PRESENT AND EFFECTIVE
- 2 WHERE MOISTURE READINGS ARE BELOW 95% RH
- 3 TO SUPPRESS RESIDUAL CONSTRUCTION MOISTURE AND SPEED UP THE INSTALLATION PROCESS



**ARDEX MVS 95**  
One Component Residual Moisture Vapour Suppressant

### The Control of Ground Bearing Moisture

#### WHEN TO USE ARDEX DPM 1 C / ARDEX DPM 1 C R

- 1 WHERE MOISTURE READINGS EXCEED 95% RH (UP TO 98% RH)
- 2 TO PROTECT THE FINAL FLOORCOVERING FROM RISING DAMP
- 3 WHERE THERE IS NO FUNCTIONING STRUCTURAL DAMP PROOF MEMBRANE OR IT MAY HAVE BEEN DAMAGED IN THE CONSTRUCTION PROCESS



**ARDEX DPM 1 C**  
One Coat Surface Damp Proof Membrane and Residual Moisture Suppressant



**ARDEX DPM 1 C R**  
Rapid Curing One Coat Surface Damp Proof Membrane and Residual Moisture Suppressant



## Karndean Designflooring adds new wood designs to extended Van Gogh Wood collection

Van Gogh Wood Charred Oak VGW102T

The UK's market leader in luxury vinyl flooring **Karndean Designflooring** is expanding its popular Van Gogh Wood collection.

Inspired by reclaimed natural wood materials, the 12 distinct new plank designs replicate the unique look that comes from the transformation of wood over time, in addition to processes such as burning, liming and smoking.

The four striking groups, French Oaks, American Redwood, Scottish Beech and Mexican Cypress ensure a grain and colour palette to suit any home.

The four, lightly lime-washed French Oak looks, Tawny Oak, Burgundy Oak, Hessian Oak and Honey Oak are reminiscent of salvaged antique flooring. The rich grain details and large scaled planks complement both traditional and contemporary homes.

The collection also includes three Rough-Luxe designs inspired by American Redwood railway sleepers – Reclaimed Redwood, Aged Redwood and Salvaged Redwood. Running with the theme of reclaimed woods, Karndean's product designers were drawn to the unique detail and texture of the Redwood

ties, which over the years had aged beautifully. Introducing wire brushing and etching techniques, they have taken the natural aging process one step further with these three designs, giving the American Redwood designs the look of repurposed timber without



Reclaimed Redwood VGW99T

the practical drawbacks of real wood such as splintering, cracking and warping.

A perfect backdrop to any living space, the three rich brown, smoked designs create a warm canvas. Incorporating fuming and

smoking techniques that have been used by real wood flooring manufacturers for years, the rich brown tones of Burnished Beech and Smoked Beech planks can accompany nearly any décor scheme, whilst the striking variation of Charred Oak makes a real statement.

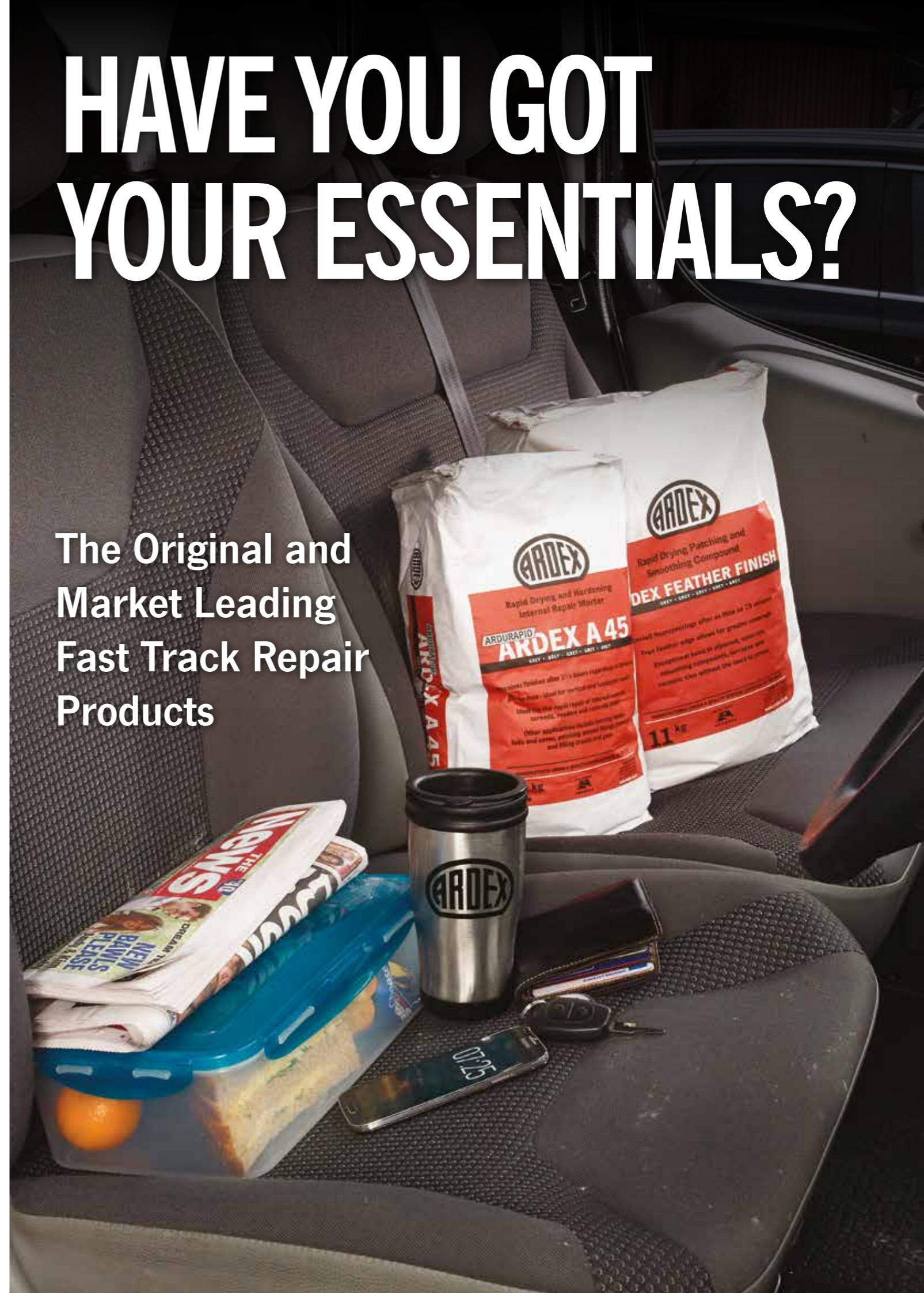
The new collection is rounded off by the stunning Lime-washed Cypress and Burnished Cypress. Combining the limed finish of Honey Oak and the burnt effect of Charred Oak, these two designs are some of the most detailed in the entire collection. The result of liming and smoking techniques is a more refined and sophisticated aesthetic suitable for a wide range of interior stylings benefiting from a highly realistic, rustic feel.

Available with a recently extended lifetime guarantee, the complete Karndean Van Gogh collection will now feature a total of 32 wood designs.

For more information  
visit [www.karndean.com](http://www.karndean.com)

# HAVE YOU GOT YOUR ESSENTIALS?

## The Original and Market Leading Fast Track Repair Products



**YOUR CASE STUDIES**  
House to Home Furnishers



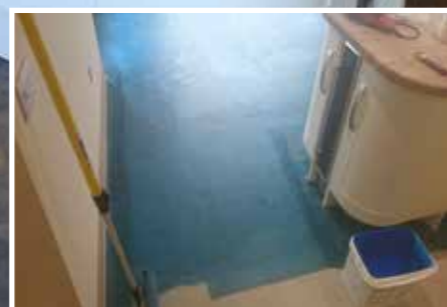
## FOR THE PERFECT FLOOR YOU NEED THE PERFECT SUBFLOOR

Established in 2009, House to Home Furnishers, based in Stranraer, Wigtownshire, is a family run business offering a complete home furnishing service. Since opening, they have continually strived to bring their customers the best in quality home furnishings and fitting services, from new flooring installations, furniture and more, along with a customer service which is second to none.

**“ARDEX K 39 has amazing flow; it’s super smooth!”**

House to Home Furnishers regularly install Luxury Vinyl Tile floorcoverings using ARDEX products, and Jamie Nelson, owner, commented “We have a great relationship with our local ARDEX Area Sales Manager, Morris Pate, who introduced us to ARDEX K 39 last year. Since then we always carry it in stock as one of our preferred levelling compounds.”

“ARDEX K 39 has amazing flow; it’s super smooth! Other levelling compounds leave joint marks and ridges, which usually means additional prep work and rubbing down the next day. ARDEX K 39 guarantees a perfect subfloor, and gives me peace of mind that, when I come back the next day, I’m ready to fit the floorcovering with no delays.”



**In this particular installation, Jamie used the following ARDEX products:**

- **MVS 95** – One Component Residual Moisture Vapour Suppressant
- **K 39** - Extended Workability, High Flow Levelling and Smoothing Compound
- The hall and front porch were fitted with Neobo, Amber Glaze Parquet. The kitchen and dining area were fitted with Karndean Art Select Melbourne.



If you’d like us to publish one of your ARDEX jobs, please get in touch: [info@ardex.co.uk](mailto:info@ardex.co.uk) or call **01440 714939**.

# GET OFF YOUR KNEES!

In recent years the popularity of applying smoothing and levelling compounds with a pin rake has increased. In this article, Darren Robinson, ARDEX National Training and Development Manager, explains the benefits of using a pin rake, and why he’s spending less time on his knees.

### Trowelled Application

I’m sure the vast majority of you were trained to use a trowel when entering the industry; I certainly was when I was 16. This method of application means you’ll spend more time kneeling, which can result in problems common with this trade. You spend enough time kneeling installing the final floorcovering, so why spend more time on your knees than you have too?

### Application with a Trowel

There’s no doubt that you can achieve a great finish using a trowel; it’s generally the time taken to cover large areas that’s the issue. The size of the trowel dictates the speed you can work at; you can only spread as much as the trowel can cover at one given time, and achieving a consistent thickness of smoothing compound is dependent on the amount of pressure that is used.

### Pin Rake/Comb Application

Spending less time kneeling down is one obvious advantage to using a pin rake, but there may be more benefits than you might think. Covering areas faster and more efficiently, more accurate coverage, a more even application, no trowel marks, that’s got to be better, right? Couple this with the superior flow characteristics of all ARDEX Levelling & Smoothing Compounds, and you’ll achieve a smooth, flat floor every time with minimum effort.

### Simple to Use

Pin Rakes are simple to set up, just adjust the blade to the desired level or application thickness, lock into position and you’re ready to go. We’ve incorporated pin rake application into every demonstration we deliver at the ARDEX Training Academy, so next time you apply a smoothing compound, consider the benefits above and ask yourself why aren’t you using one?

**WANT TO GIVE IT A TRY?**

WE’RE GIVING AWAY PIN RAKES TO THE FIRST 10 PEOPLE WHO EMAIL US AT [INFO@ARDEX.CO.UK](mailto:info@ardex.co.uk) OR TWEET USING THE #ARDEXPINRAKE  
WE’LL ALSO THROW IN 2 FREE BAGS OF ARDEX K 39!

**ARDEX offer a range of demonstrations and seminars that can be tailored to your specific needs. Courses can either be taken at the ARDEX Training Academy in Haverhill, Suffolk, or at an alternative location of your choice.**

Training is carried out by our team of technical experts who have both extensive knowledge and practical experience of the flooring industry. This allows our courses to remain accurate and up-to-date, covering the latest information, technological advances and industry regulations.

Following our first Subfloor Preparation and Installation of LVT Course in April, we have a number of other dates available for the rest of the year.

**30th June 2016 / 25th August 2016 / 29th September 2016 / 27th October 2016**

To find out more, please contact our National Training & Development Manager, Darren Robinson, on **01440 714939**.



For those

**"WE WON!"**  
moments

**DesignerFloors**  
Collection

Heavy duty LVT

[www.lifestyle-designerfloors.co.uk](http://www.lifestyle-designerfloors.co.uk)



**ISN'T IT TIME YOU JOINED?**



Give us a try or you will never know if the NICF is right for you!



Tel: 0115 958 3077 | [www.nicfltd.org.uk](http://www.nicfltd.org.uk) | Email: [info@nicfltd.org.uk](mailto:info@nicfltd.org.uk)

Make a difference  
**be part of the winning team**  
with the NICF



I joined the NICF some seven years ago and I can honestly say that being a member has helped me in establishing myself as a quality installer. Membership can benefit us all in different ways and some of the key benefits that have worked for me have been:

- ✓ Ability to gain work through being listed on the website NICF directory
- ✓ Use of the NICF logo to promote being an accredited installer
- ✓ Access to advice and help from experienced and seasoned NICF industry professionals
- ✓ Business Support Helpline offering business advice and help with disputes
- ✓ Use of the NICF Domestic Guide to Flooring
- ✓ 15% off FITA standard training courses – a chance to improve existing abilities; learn to fit different flooring types; learn new fitting techniques and up-to-date methods

MEMBERSHIP ALSO PROVIDES YOUR CLIENTS WITH THE ASSURANCE OF QUALITY WORKMANSHIP.

## KEY CONTACTS

For more information on ARDEX products please speak to your local flooring distributor, or ARDEX Area Sales Manager.

- **MORRIS PATE** SCOTLAND

**07860 528824**

- **JOHN GLEDHILL** CLEVELAND, DURHAM, CUMBRIA, TYNE & WEAR, NORTHUMBERLAND

**07860 528827**

- **KEVIN GALE** YORKSHIRE, HUMBERSIDE, NORTH LINCOLNSHIRE

**07860 528829**

- **DAVID CLAY** CHESHIRE, MERSEYSIDE, GREATER MANCHESTER, LANCASHIRE, CLWYD, GWYNEDD

**07860 528825**

- **JONATHAN ARDLEY** BUCKINGHAMSHIRE, CAMBRIDGESHIRE, NORFOLK, SUFFOLK, BEDFORDSHIRE, NORTHAMPTONSHIRE

**07977 412477**

- **RICKY McNAMARA** NOTTINGHAMSHIRE, DERBYSHIRE, STAFFORDSHIRE, SHROPSHIRE, HEREFORDSHIRE, WORCESTERSHIRE, WARWICKSHIRE, LEICESTERSHIRE, WEST MIDLANDS, POWYS

**07966 646232**

- **JOHN OLIVER** ESSEX, HERTFORDSHIRE, MIDDLESEX, NORTH EAST LONDON

**07860 440725**

- **GLEN SELL** KENT, SUSSEX, SOUTH EAST LONDON

**07966 646233**

- **DAVID PETLEY** WEST BERKSHIRE, MIDDLESEX, SURREY, HAMPSHIRE, DORSET, SOUTH WEST LONDON, CHANNEL ISLANDS

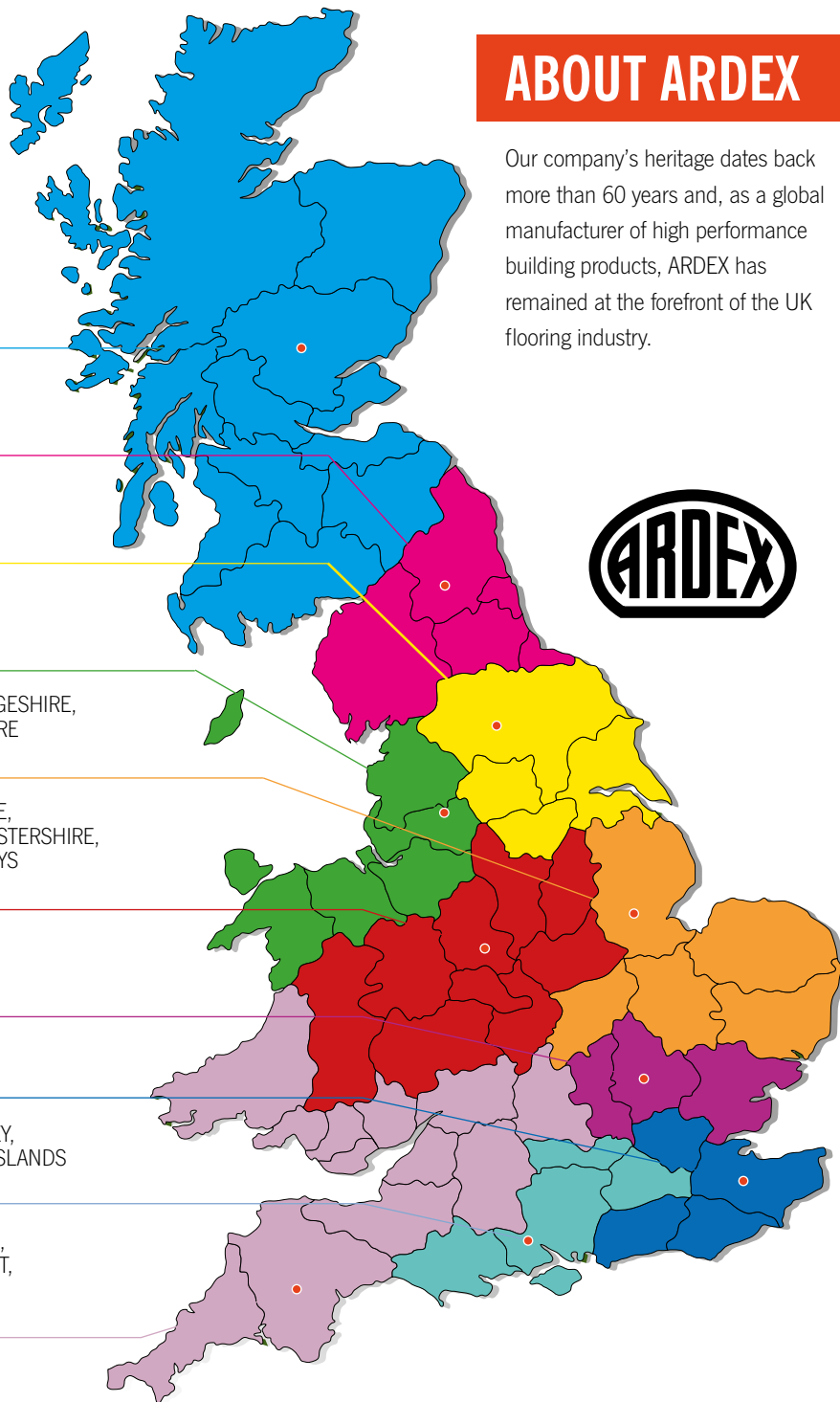
**07836 258087**

- **RICHARD MARDEN** OXFORDSHIRE, EAST BERKSHIRE, GLOUCESTERSHIRE, AVON, CORNWALL, DEVON, SOMERSET, WILTSHIRE, GWENT, GLAMORGAN, DYFED

**07860 528823**

## ABOUT ARDEX

Our company's heritage dates back more than 60 years and, as a global manufacturer of high performance building products, ARDEX has remained at the forefront of the UK flooring industry.



For the latest information on all ARDEX products including technical data sheets, health and safety data sheets and product coverage calculators, please visit the ARDEX website at [www.ardex.co.uk](http://www.ardex.co.uk)